



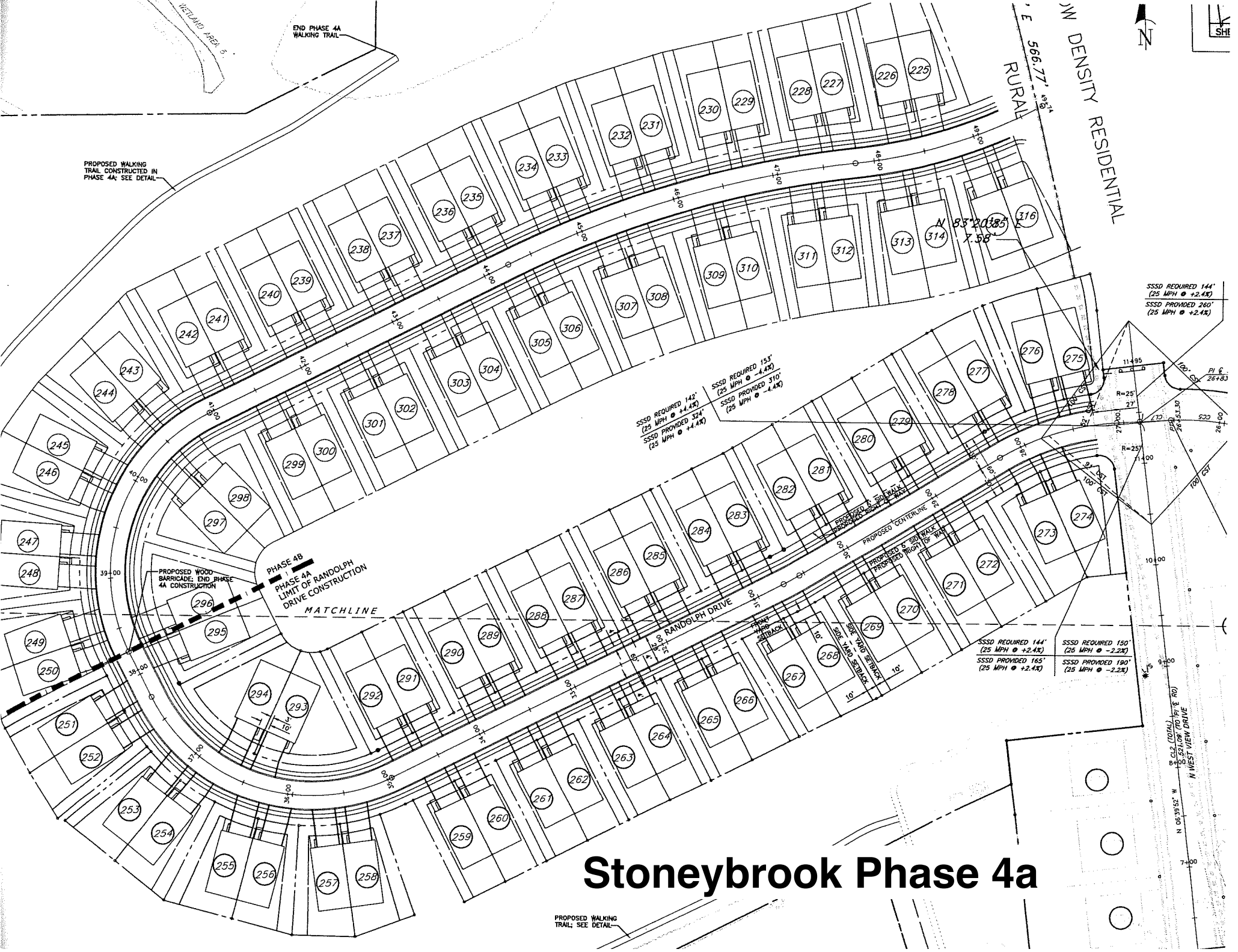
N DENSITY RESIDENTIAL

E 566.77' ±

RURAL

END PHASE 4A WALKING TRAIL

PROPOSED WALKING TRAIL CONSTRUCTED IN PHASE 4A; SEE DETAIL



SSSD REQUIRED 144' (25 MPH @ +2.1%)  
SSSD PROVIDED 260' (25 MPH @ +2.1%)

SSSD REQUIRED 142' (25 MPH @ +4.4%)  
SSSD PROVIDED 324' (25 MPH @ +4.4%)  
SSSD REQUIRED 153' (25 MPH @ -4.4%)  
SSSD PROVIDED 310' (25 MPH @ -4.4%)

SSSD REQUIRED 144' (25 MPH @ +2.1%)  
SSSD PROVIDED 165' (25 MPH @ +2.1%)  
SSSD REQUIRED 150' (25 MPH @ -2.2%)  
SSSD PROVIDED 190' (25 MPH @ -2.2%)

PHASE 4B  
PHASE 4A  
LIMIT OF RANDOLPH  
DRIVE CONSTRUCTION

MATCHLINE

# Stoneybrook Phase 4a

PROPOSED WALKING TRAIL; SEE DETAIL

N 08°39'52" W  
P.C. (TOTAL) TO P.I. (E RO)  
S.C. (TOTAL) TO P.I. (E RO)  
N WEST VIEW DRIVE